



# Giant Knotweed Extract





- English Name: Giant Knotweed Extract
- Latin Name: Polygonum Cuspidatum
- Extract Part : Root
- Molecular Formula: C<sub>14</sub>H<sub>12</sub>O<sub>3</sub>
- Molecular Weight: 228.25
- Active ingredient: Resveratrol, Polydatin
- Appearance: Brown to White Fine powder
- Test method: HPLC
- Identification: TLC
- Solubility: Partly solubility in Water
- Method: Water / Alcohol
- Brand Name: Hunan Nutramax Inc.





| Series No | Product    | Specification   |
|-----------|------------|-----------------|
| 1         | Resverarol | 10% Resveratrol |
| 2         |            | 20% Resveratrol |
| 3         |            | 50% Resveratrol |
| 4         |            | 98% Resveratrol |
| 4         | Polydatin  | 98% Polydatin   |





## What is Giant Knotweed Extract produced in Hunan NutraMax Inc ?

- Resveratrol is extracted from *Polygonum cuspidatum* and grape skin, its rich with Both cis - resveratrol and trans-resveratrol.
- Resveratrol is naturally occurring phytoalexin produced by some higher plants in response to injury or fungal infection. Phytoalexins are chemical substances produced by plants as a defense against infection by pathogenic microorganisms, such as fungi. Alexin is from the Greek, meaning to ward off or to protect.
- Resveratrol also have alexin-like activity for humans. Epidemiological, in vitro and animal studies suggest that a high resveratrol intake is associated with a reduced incidence of cardiovascular disease, and a reduced risk for cancer





## Where will NutraMax' s Giant Knotweed Extract used for ?

- \* Anti-cancer
- \* Effect on cardiovascular system
- \* Antibacterial and antifungal
- \* Nourish and protect liver
- \* Antioxidant and quench free-radicals
- \* Impact on the metabolism of osseous issue





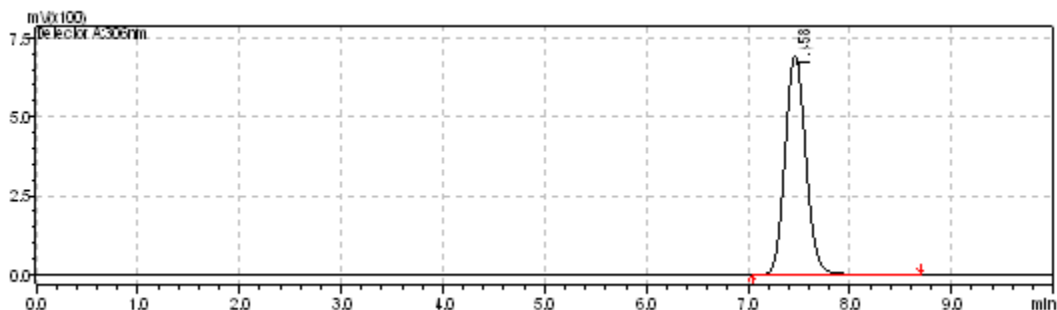
## Application of NutraMax ' s Giant Knotweed Extract ?

- Applied in food field, it's used as food additive with the function of lengthening life.
- Applied in pharmaceutical field, it is frequently used as medicine supplement or OTCs ingredients and owns good efficacy for treatment of cancer and cardio-cerebrovascular disease.
- Applied in cosmetics, it can delay aging and prevent UV radiation.





- Test Chromatogram of Giant Knotweed Extract



**TESTED BY THE THIRD LAB:NSF**



**NSF International**

NSF (Shanghai) Testing Technology Co., Ltd.  
Unit D/F, 1 Floor, Building 10, 1188 Lianhang Road,  
Minhang District, Shanghai, China  
Tel: +86.21.2428.6300 | Fax: +21.2428.6299  
[www.nsfchina.com](http://www.nsfchina.com)

**TEST REPORT**

测试报告





## Hunan NutraMax Inc.

Add: F25,Jiahe Blog,#217 Wanjiali Road ,Changsha , China ,410016

Tel: +86-731-82939-655/656/657/658/659/660/661/676

Fax: +86-731-82938822

Email: [sales@nutra-max.com](mailto:sales@nutra-max.com)

Http: // [www.nutra-max.com](http://www.nutra-max.com)

